



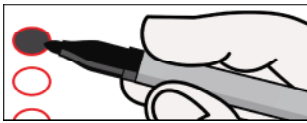
# Official Ballot for Democratic Party Clear Creek County Primary Election Tuesday, June 30, 2020

Precinct: 2021310001  
Ballot Type: DEM

*Shirley Gordon*  
Clerk and Recorder

- Return only one ballot.** If your mail ballot packet contains ballots for both the Democratic and Republican Parties, mark and return only one ballot, and destroy the other. If you mark and return both party ballots, neither will count.
- Please vote your mail ballot.** Due to COVID-19, help us make this a safe election for everyone by returning this ballot via mail or drop box.

## Instructions



**To vote for a named candidate,** completely fill in the oval to the left of your choice. Use blue or black ink.



**To make a correction,** draw a bold line through the oval and candidate name marked by mistake. Then, completely fill in the oval next to the correct name.

**WARNING:** Any person who, by use of force or other means, unduly influences an eligible elector to vote in any particular manner or to refrain from voting, or who falsely makes, alters, forges or counterfeits any mail ballot before or after it has been cast, or who destroys, defaces, mutilates, or tampers with a ballot is subject, upon conviction, to imprisonment, or to a fine, or both. Section 1-7.5-107(3)(b), C.R.S.

Federal Offices	State Offices	County Offices
<b>United States Senator</b> (Vote for One) <ul style="list-style-type: none"> <li><input type="radio"/> Andrew Romanoff</li> <li><input type="radio"/> John W. Hickenlooper</li> </ul>	<b>Regent of the University of Colorado - Congressional District 2</b> (Vote for One) <ul style="list-style-type: none"> <li><input type="radio"/> Callie Rennison</li> <li><input type="radio"/> Dave Gross</li> <li><input type="radio"/> Aaron Harber</li> </ul>	<b>County Commissioner - District 2</b> (Vote for One) <p>There are no candidates for this office.</p>
<b>Representative to the 117th United States Congress - District 2</b> (Vote for One) <ul style="list-style-type: none"> <li><input type="radio"/> Joe Neguse</li> </ul>	<b>State Representative - District 13</b> (Vote for One) <ul style="list-style-type: none"> <li><input type="radio"/> Judy Amabile</li> </ul>	<b>County Commissioner - District 3</b> (Vote for One) <ul style="list-style-type: none"> <li><input type="radio"/> Randy Wheelock</li> </ul>
	<b>District Attorney - 5th Judicial District</b> (Vote for One) <ul style="list-style-type: none"> <li><input type="radio"/> Heidi McCollum</li> <li><input type="radio"/> Braden Christopher Angel</li> </ul>	